

Mod. CB

Water nozzle large bell

Standard characteristics

Body, deflector and support pole material: Carbon steel

Connection type: Flanged

Coating: Epoxy Primer + Polyuretanic red coat RAL3000,
Total DFT >120 µm

Approvals



MODELLO/MODEL	SIZE	K FACTOR	PESO/WEIGHT
CB-40	1 1/2"	134	3
CB-50	2"	398	4
CB-65	2 1/2"	670	6
CB-80	3"	939	7
CB-100	4"	1252	14
CB-150	6"	2817	20
CB-200	8"	4651	30

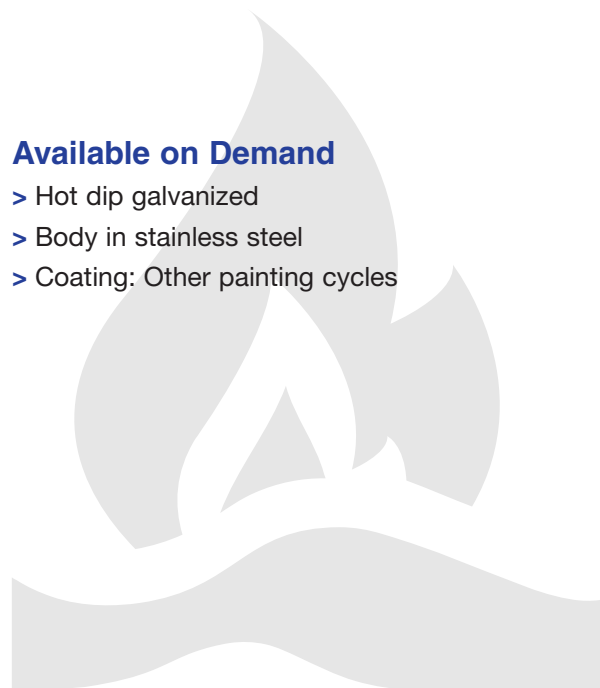
Notes

In case of inquiry and/or order specify the following datas:

> Model and flow rate

Available on Demand

- > Hot dip galvanized
- > Body in stainless steel
- > Coating: Other painting cycles



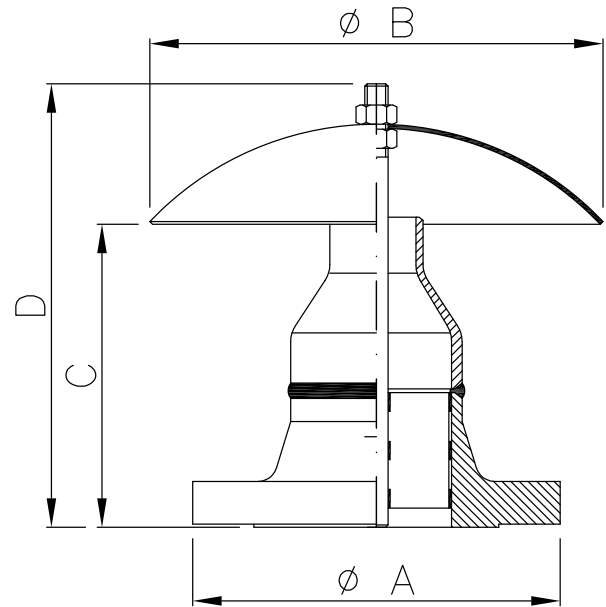
www.fasspa.net

Mod. CB

Water nozzle large bell

Layout & Overall Dimension

MODELLO <i>MODEL</i>	φ A	φ B	C	D	PESO <i>WEIGHT</i>
CB 40	1-1/2"	235	125	190	3 KG
CB 50	2"		146	210	4 KG
CB 65	2-1/2"		157	230	6 KG
CB 80	3"		175	310	7 KG
CB 100	4"	460	175	310	14 KG
CB 150	6"		226	365	20 KG
CB 200	8"		251	390	30 KG



Typical Application

