

Mod. HSC-HSB

Hydro shields portable and and for fixed installation

Standard characteristics

Body material: Cast aluminium

Shield material: Forged aluminium

Inlet connection: Threaded BSP 2"

Coating: Epoxy Primer + Polyuretanic red coat RAL3000,
Total DFT >120 µm

Weight: HSC: ~ 2,5 Kg
HSB: ~ 4,4 Kg

Approvals



Notes

In case of inquiry and/or order specify the following datas:

> Model, type of connection

Available on Demand

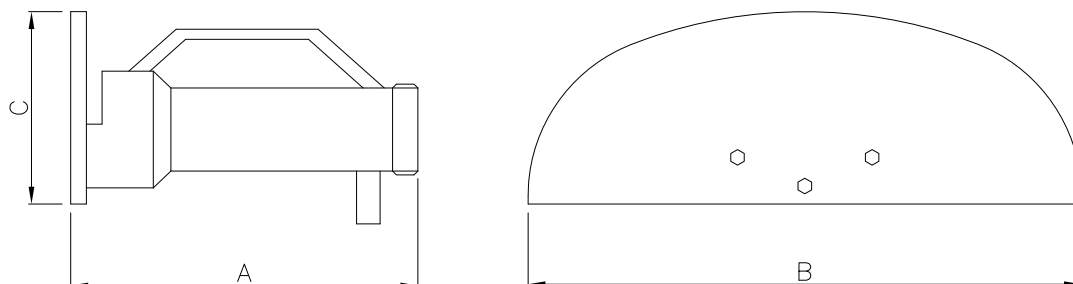
- > Inlet connection with coupling UNI - BS 336
- AFNOR - STORZ - GOST - NH
- > Flanged inlet connection
- > Coating: Other painting cycles

www.fasspa.net

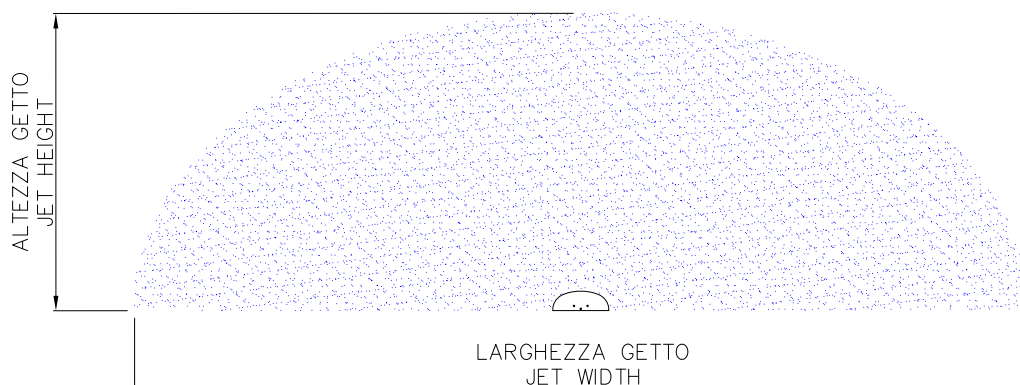
Mod. HSC-HSB

Hydro shields portable and and for fixed installation

Layout & Overall Dimension



MODELLO <i>MODEL</i>	A	B	C	PESO <i>WEIGHT</i>
HSC	200	210	105	2,5Kg
HSB	200	260	130	4,4Kg



MODELLO <i>MODEL</i>	PORTATE FLOW RATES		ALTEZZA GETTO JET HEIGHT		LARGHEZZA GETTO JET WIDTH	
	5 BAR	8 BAR	5 BAR	8 BAR	5 BAR	8 BAR
HSC	800 l/1'	1100 l/1'	8 m	9 m	24 m	29 m
HSB	1400 l/1'	1700 l/1'	9 m	10 m	27 m	31 m