

Mod. LM

Portable low expansion foam branchpipe

Standard characteristics

Body Size: 2 1/2", 3" Depending on requested flow rate

Flow Rate: From 200 to 800 l/1' calculated at 5 barg

Body material: Stainless steel AISI 304

Nozzle material: PVC high resistance

Connection type: UNI Coupling

Coating: Epoxy Primer + Polyuretanic red coat RAL3000,
Total DFT >120 µm

Weight: 2 1/2": ~3,8 Kg
3": ~4,2 Kg

Expansion ratio: According to EU EN-13565-1 and NFPA 11 rules



Approvals



Notes

In case of inquiry and/or order specify the following datas:

- > Body material, Connection type, Working pressure, Requested flow rate

Available on Demand

- > Different couplings on customer's request (UNI, BS, STORZ, AFNOR, NH, GOST)
- > Flow rates different from standard
- > Stainless steel body in AISI 316
- > Coating: Other painting cycles

www.fasspa.net

Mod. LM

Portable low expansion foam branchpipe

Layout & Overall Dimension

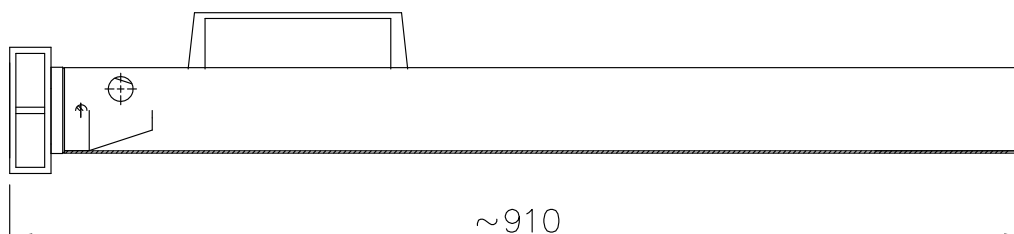
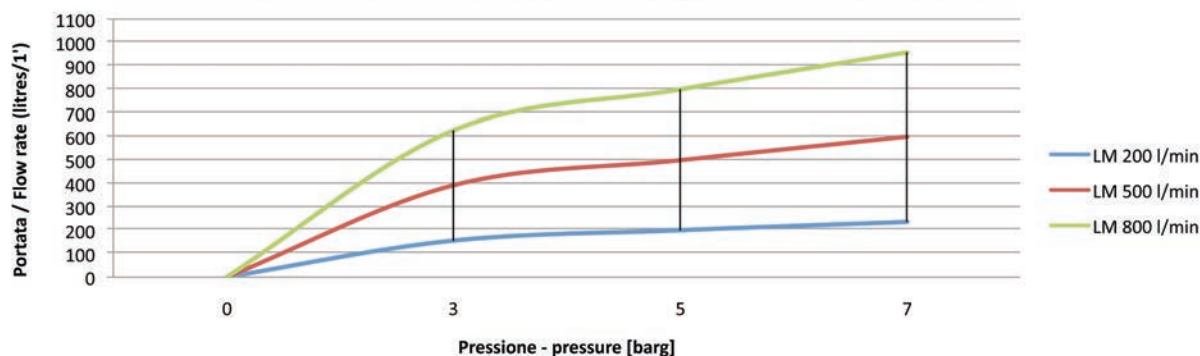


Grafico di portata - Flow rate diagram Canna schiuma - Foam branchpipe LM

Test eseguito da FAS nel Centro Test con misuratore di portata digitale AT 868 GE Panametrics
Test performed by FAS into Internal Test Center with digital flow-meter AT 868 GE Panamet



www.fasspa.net