

Mod. VF-VFP-VFD

Foam Pourers

Standard characteristics

Body size for VF and VFP: From 2" to 10"

Body material for VF and VFP: Carbon steel

Body size for VFD: 4"

Body material for VFD: Bronze or anticorodal light alloy

Inlet connections VF and VFP: Flange ANSI 150 RF

Inlet connection VFD: 4", 6" on request

Coating: Epoxy Primer + Polyuretanic red coat RAL3000,
Total DFT >120 µm

VF weight: VF-2": ~5 Kg
VF-3": ~7 Kg
VF-4": ~11 Kg
VF-6": ~21 Kg
VF-8": ~35 Kg
VF-10": ~45 Kg

VFP weight: VFP-2": ~3,5 Kg
VFP-2½": ~4,9 Kg
VFP-3": ~5,2 Kg
VFP-4": ~8 Kg
VFP-6": ~11,8 Kg
VFP-8": ~13 Kg
VFP-10": ~16 Kg

VFD weight: ~13 Kg

Notes

In case of inquiry and/or order specify the following datas:

> Body material, Flanges type and diameter

Compatible with

> Foam chambers mod. PX and GX (See dedicated page)

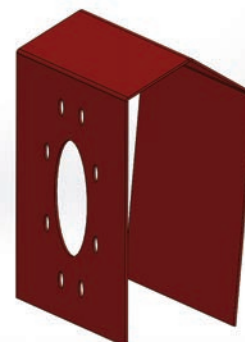
Available on Demand

> Flanges type different from standard
> VF and VFP body hot dip galvanized
> Body in stainless steel
> Coating: Other painting cycles

Mod. VF



Mod. VFP



Mod. VFD

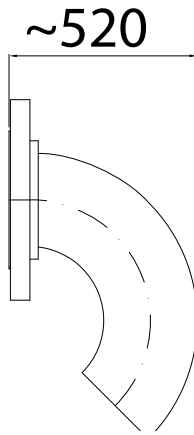


www.fasspa.net

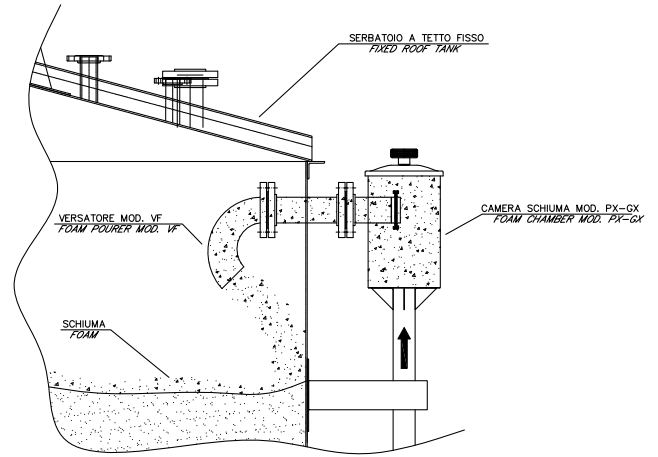
Mod. VF-VFP-VFD

Foam Pourers

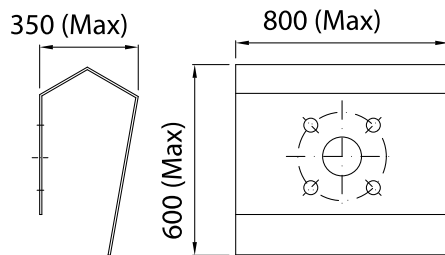
Mod. VF - Layout & Overall Dimension



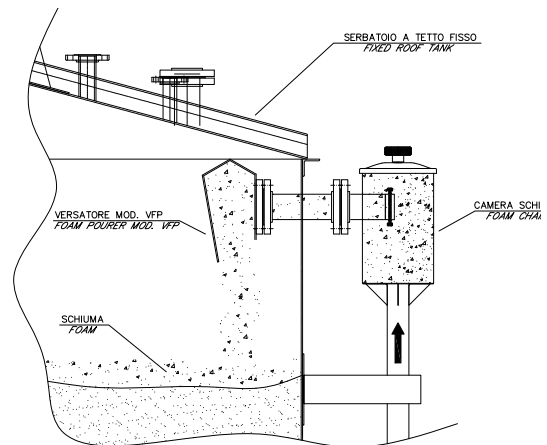
Typical application



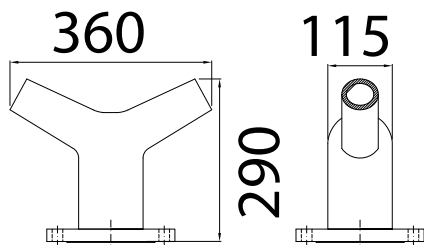
Mod. VFP - Layout & Overall Dimension



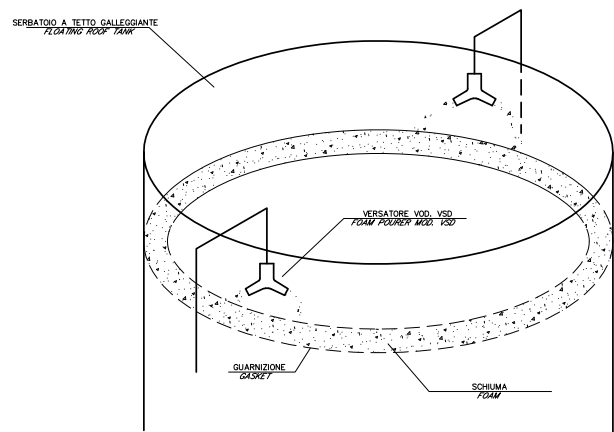
Typical application



Mod. VFD - Layout & Overall Dimension



Typical application



www.fasspa.net